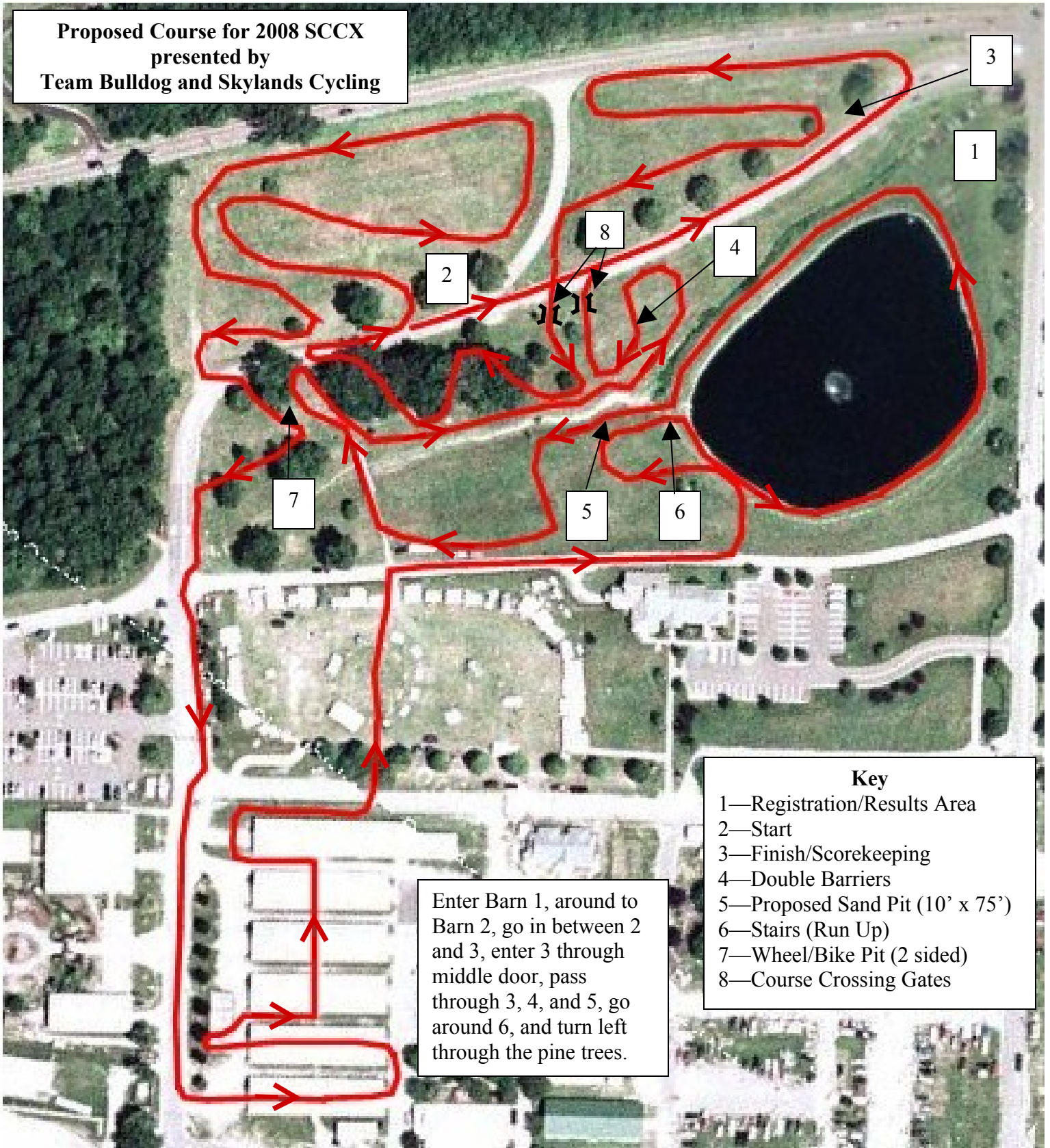


**Proposed Course for 2008 SCCX
presented by
Team Bulldog and Skylands Cycling**



Enter Barn 1, around to Barn 2, go in between 2 and 3, enter 3 through middle door, pass through 3, 4, and 5, go around 6, and turn left through the pine trees.

- Key**
- 1—Registration/Results Area
 - 2—Start
 - 3—Finish/Scorekeeping
 - 4—Double Barriers
 - 5—Proposed Sand Pit (10' x 75')
 - 6—Stairs (Run Up)
 - 7—Wheel/Bike Pit (2 sided)
 - 8—Course Crossing Gates